

# CASE STUDY REPORT

Advanced Architectural Design

Final Year B. Arch. ( Sem IX ) , 2016.

## Management Institute At Kharghar, Navi Mumbai.

Site visit for three management Institutes were arranged so as to understand functional and aesthetical requirements. Students noted requirements of administrative area, classrooms, laboratories, library, seminar halls, auditorium, open air theater and services. Detailed analysis report was prepared and review was conducted on the same.

### Case study – 1

**Bharati Vidyapeeth Institute of Management, Kadamwadi, Kolhapur.**



Centrally located Staircase



Library and Reading Room



Class Room



Administration

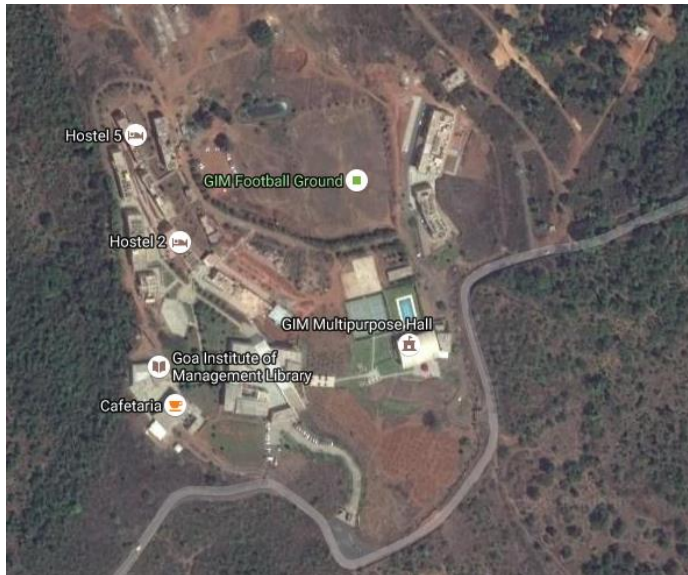
### Conclusion

- The Institute building is initially designed for two programmes only. Due to increase of additional course and intake at a later stage, common areas like entrance lobbies, passages seem to be congested.
- Circulation within the campus is good.
- Colour scheme of the building is maintained in interior design also.



## Case study – 2

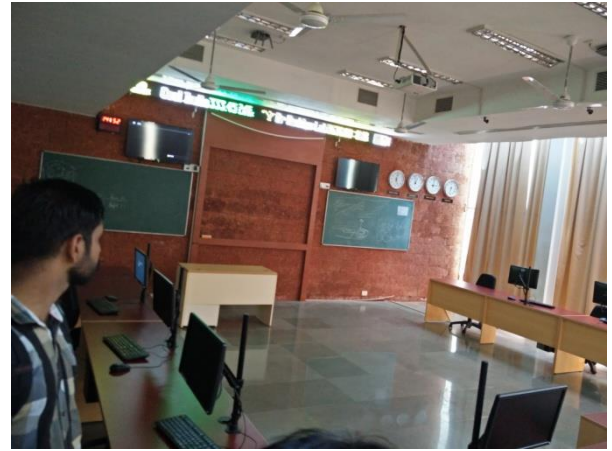
### Goa Institute of Management, Sanquelim, Goa.



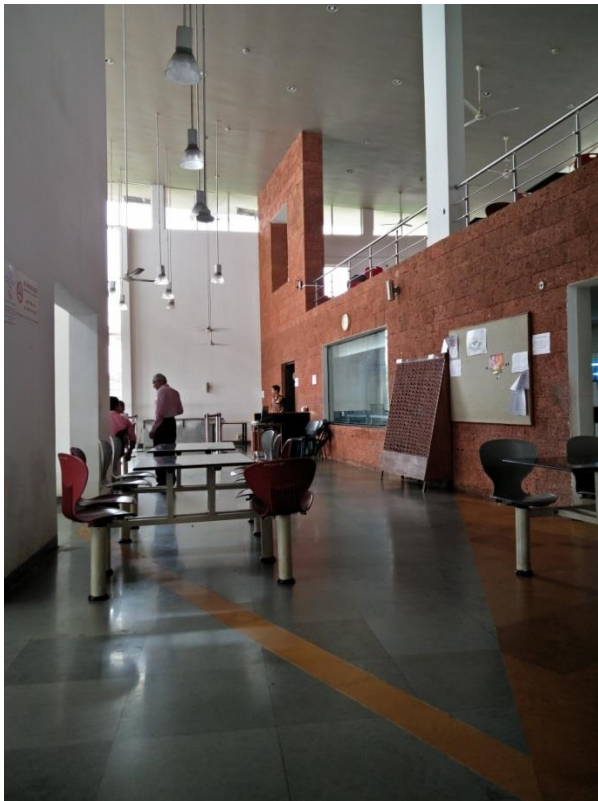
Contemporary campus with mid rise development.



Typical classroom



Internet Centre



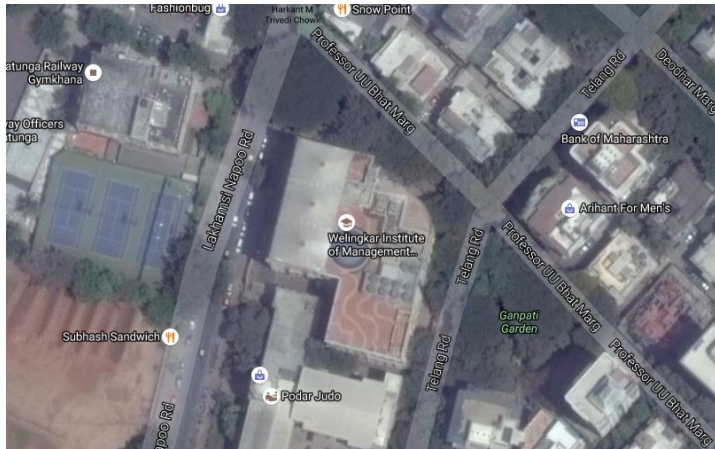
Dining hall

#### Conclusion

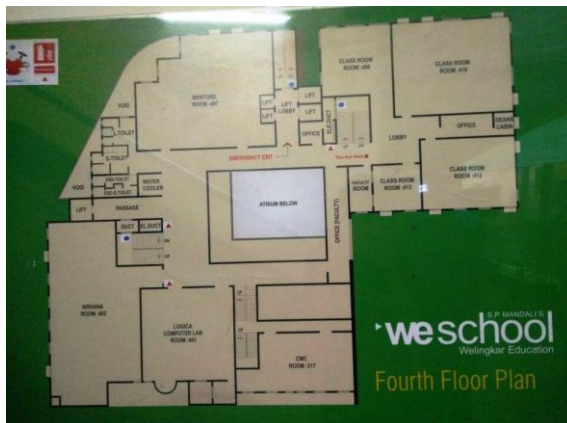
- The campus is with mid rise buildings and is well spread.
- Advantage of topography is taken for site planning.
- Campus displays contemporary character.

## Case study – 3

### Welingkar Institute of Management Development and Research Mumbai.

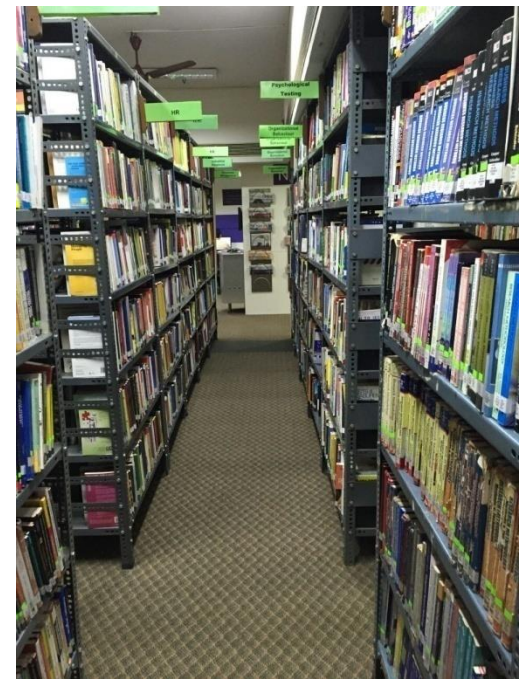
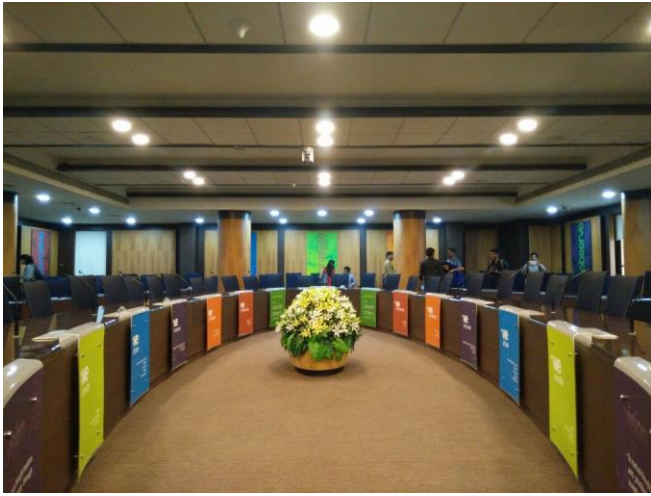


The building of Welingkar Institute of Management at Matunga, Mumbai is a highrise building and is selected for case study of byelaws, services, structure etc.



	A Wing	C Wing	B Wing
<b>Basement</b>			Gymnasium Recreation Centre Electrical Panel Room Lockers
<b>Stilt Level</b>	Autonomous Wing Library (Stacking) A/V Library	Parking	Parking
<b>Ground Level</b>	Security Cabin		Amphitheatre ICICI Bank DG (Power Back up)
<b>Level Zero</b>	Library Corporate Library Welingkar Research Centre Faculty Room Travel Desk	Student Cafeteria VIP Lounge Space bar Faculty Room	Auditorium
<b>Level Zero Mezzanine</b>			Facility Management
<b>Level 1</b>	MDP Centre Counselor Rooms	Amphitheatre Executive Cafeteria	Reception Director's Secretariat Director's Chamber Board Room Admin / Accounts Office Innowe
<b>Level 2</b>	Dean/Faculty Room Class Rooms	Brainstorm Leadership Lab	Class Rooms
<b>Level 3</b>	Dean/Faculty Rooms Class Rooms Distance Learning Cell	IT Centre Academic Deliverable Cell	Class Rooms
<b>Level 3 Mezzanine</b>			
<b>Level 4</b>	Dean/Faculty Rooms Class Rooms	ISAKA Faculty Room Software Support	Loggia Nivvana
<b>Level 4 Mezzanine (Access From 3rd &amp; 4th Floor)</b>			Career Management Centre NHRDN
<b>Level 5</b>	Dean/Faculty Rooms Class Rooms	Class Rooms Faculty Rooms	Director's Chamber Dean Rooms Board Room Global Venture Office Marketing Office
<b>Level 6</b>	Dean/Faculty Rooms Class Rooms	Class Rooms Faculty Rooms	Design / Innovation Lab Library Reading Room
<b>Level 7</b>	Roof Top	Roof Top	Roof Top

Plans and related information displayed in the corridors of the institute



Conference hall, classroom Type 1 & 2, library, Auditorium, Connecting passage & Library

As a part of design studio, joint workshop with students of Goa college of architecture was conducted at Goa.



Students of both the colleges having interaction with each other.



Principal of Goa College of Architecture Dr. Ashish Rege giving lecture



Discussion with Ar. Dean D'cruz, Professor in Design Chair, Goa College of Architecture



Students presented Aakar Magazine to Dr. Ashish Rege and Ar. Dean D'cruz



Slide show by Ar. Dean D'cruz at his studio at Porvirim, Panaji

## Conclusion

- The building of Welingkar Institute of Management is located in crowdy area of Matunga with G + 7 floors.
- Section of the building is developed to avoid harsh sunrays from west side but to welcome and spread the wind flow within the building with stack effect.
- Entrance steps of two floors hige offer a grand welcoming character to the building.
- Internal lobbies vary in shape and sizes on each floor thereby avoiding monotony and providing spillout spaces for the occupants.
- Building displays contemporary character.
- Students were able to study services of the highrise building as well as those required for management institute.

Students were at an added advantage as they had an opportunity to interact with architect of the Welingkar Institute Prof. T. D. Gadgil from Sangli. He presented slide show on the architecture of Welingkar Institute and discussed many aspects of planning, design, climate, byelaws, services, aesthetics etc.



Prof. S. M. Phadtare welcoming  
Ar. T. D. Gadil



Introduction by Prof. C. S. Dudgikar



Slide show by Ar. T. D. Gadil